

Migration in Albania

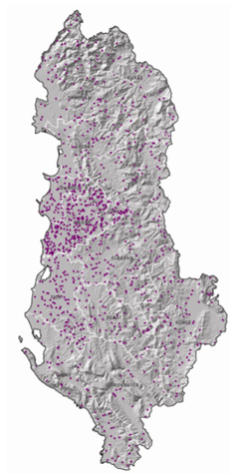
Didier Ruedin

University of Neuchâtel
didier.ruedin@unine.ch

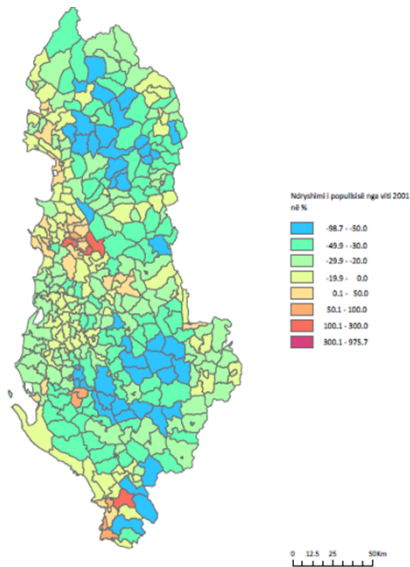
Tirana, 25 November 2013

Migration in Albania

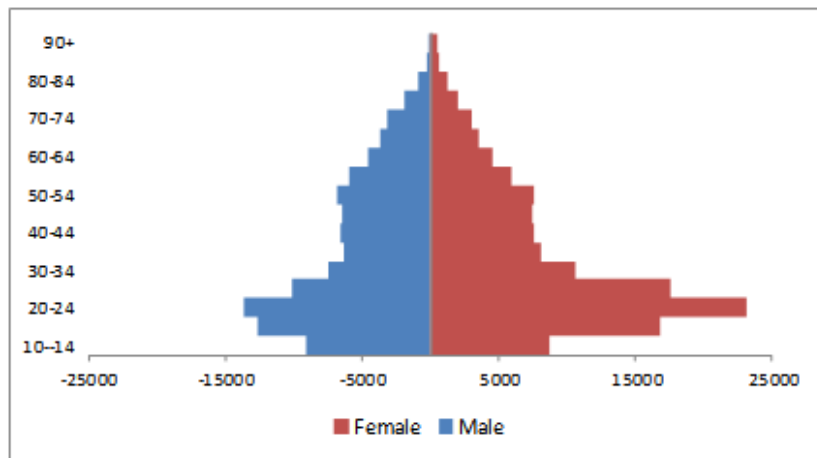
- ▶ Internal migration
- ▶ International migration
- ▶ Return migration
- ▶ Foreigners in Albania
- ▶ Impact of migration



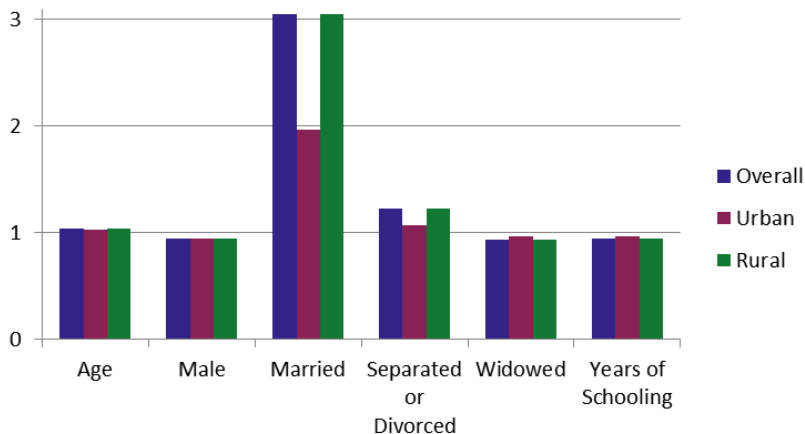
Internal Migration: Population Change



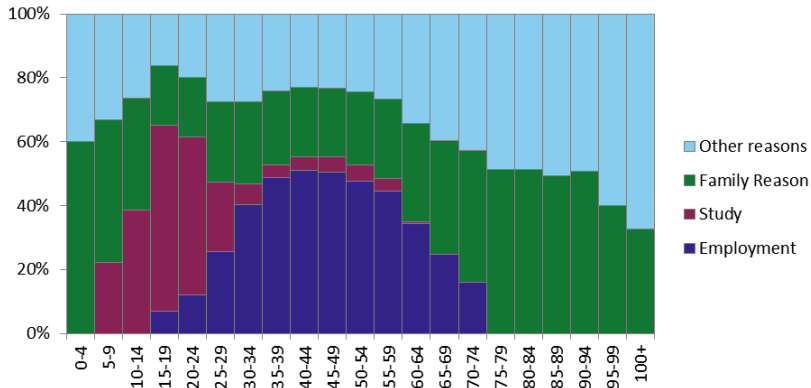
Internal Migration: Gender



Who moves within Albania?



Reasons for Internal Migration



Patterns of Movements

- ▶ 97% to Tirana = direct
- ▶ 91% to Dibër = direct
- ▶ indirect itineraries exist (within 10 years)

Internal Migration: To Tirana

Change 2001-2011



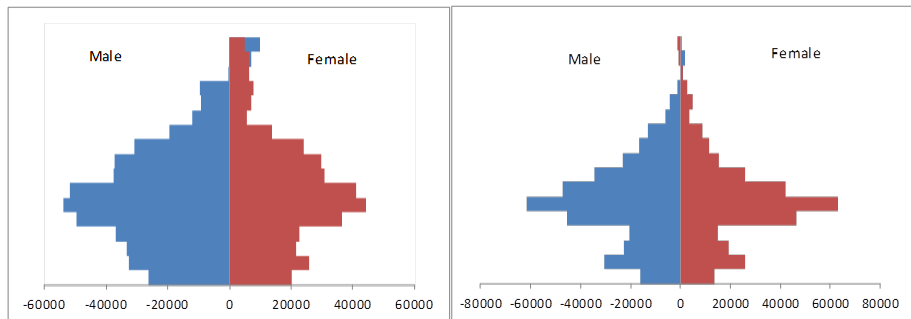
Six communes surrounding Tirana

Internal Migration: Dependency Ratio

- ▶ 2001: ≈ 60
- ▶ 2011: ≈ 45
- ▶ lower population growth at young ages

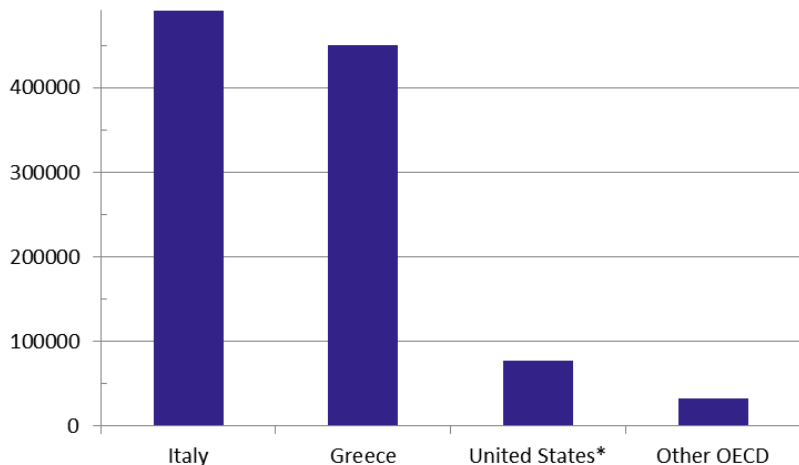
Six communes surrounding Tirana

Emigrants: 1989 – 2001, 2001 – 2011



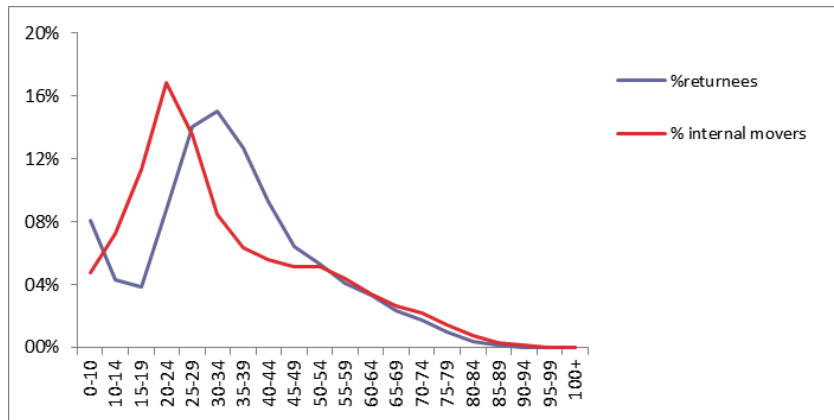
- ▶ gender differences disappearing

Countries of Destination

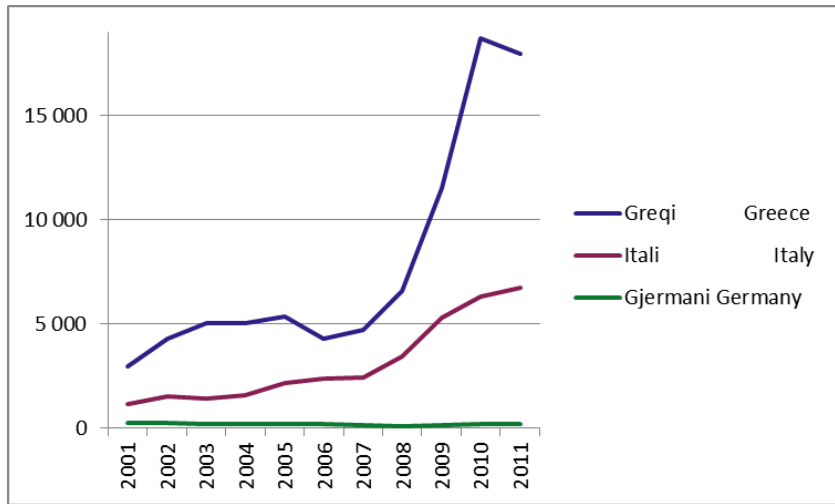


immigrant stock, 2011, OECD Stats

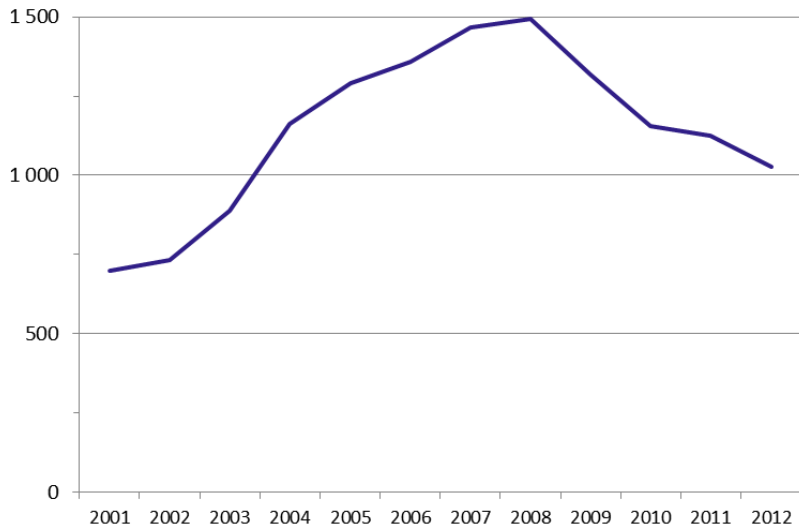
Return Migration: Age



Return Migration: Where From?



Importance of Remittances



Impact: How are Remittances Spent?

